



Renewable Generation Interconnection Overview



March 26, 2025

Electric Service Quick Facts

1.5 Million
Electric Meters



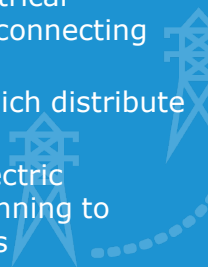
~335 MWs
Utility-Owned
Energy Storage
Systems



89,172
Electric
Vehicles in
San Diego



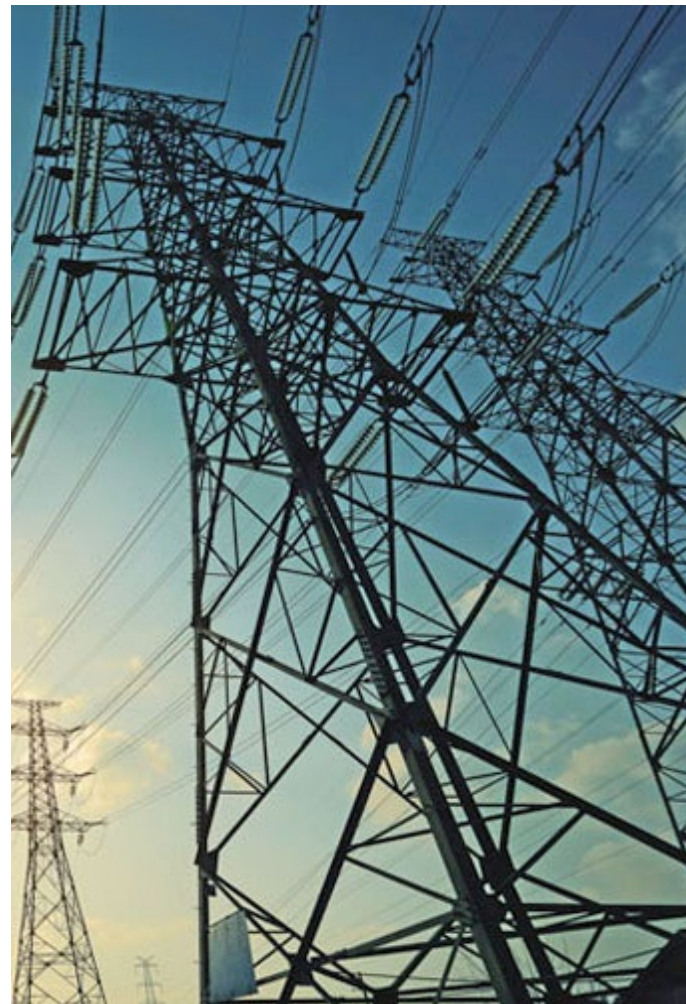
1,994 miles of electrical
transmission lines, connecting
to...
159 substations which distribute
power over...
17,400 miles of electric
distribution lines running to
homes & businesses



Service spanning
4,100
sq. miles
throughout San
Diego and southern
Orange counties

60%+
Underground
Electrical
Distribution

The highest %
in the US, &
most running
through
neighborhoods



Generation Interconnection Portfolio

Current Status of Generation Interconnection Projects

	Completed	Active	Total
# Projects	41	28	69
MWs	4,980	7,066	12,046

- 4,980 MWs of completed projects since 2005

SDGE met developers' need by dates

- 7,066 MWs currently active (contracts in place or being negotiated) over the next several years

Almost 150% increase in MWs

- More potential projects in future Cluster Studies



Typical Battery Modules

Grid Hardening Transmission Projects

- **Currently have 6 CAISO directed grid hardening projects to complete between 2028 and 2035 that could impact generation projects**

We are currently not forecasting our grid hardening projects to cause delay to the current active and pending Generation Projects

Challenges to Meeting Grid Hardening Project Dates

Procurement

Long lead times for major equipment (i.e., transformers, circuit breakers)

Permitting (Local and Federal)

Local agency jurisdiction overlapping CPUC jurisdiction

Federal agency resources' ability to meet approval timelines

Resources

Many projects in queue. Resources could be stretched thin