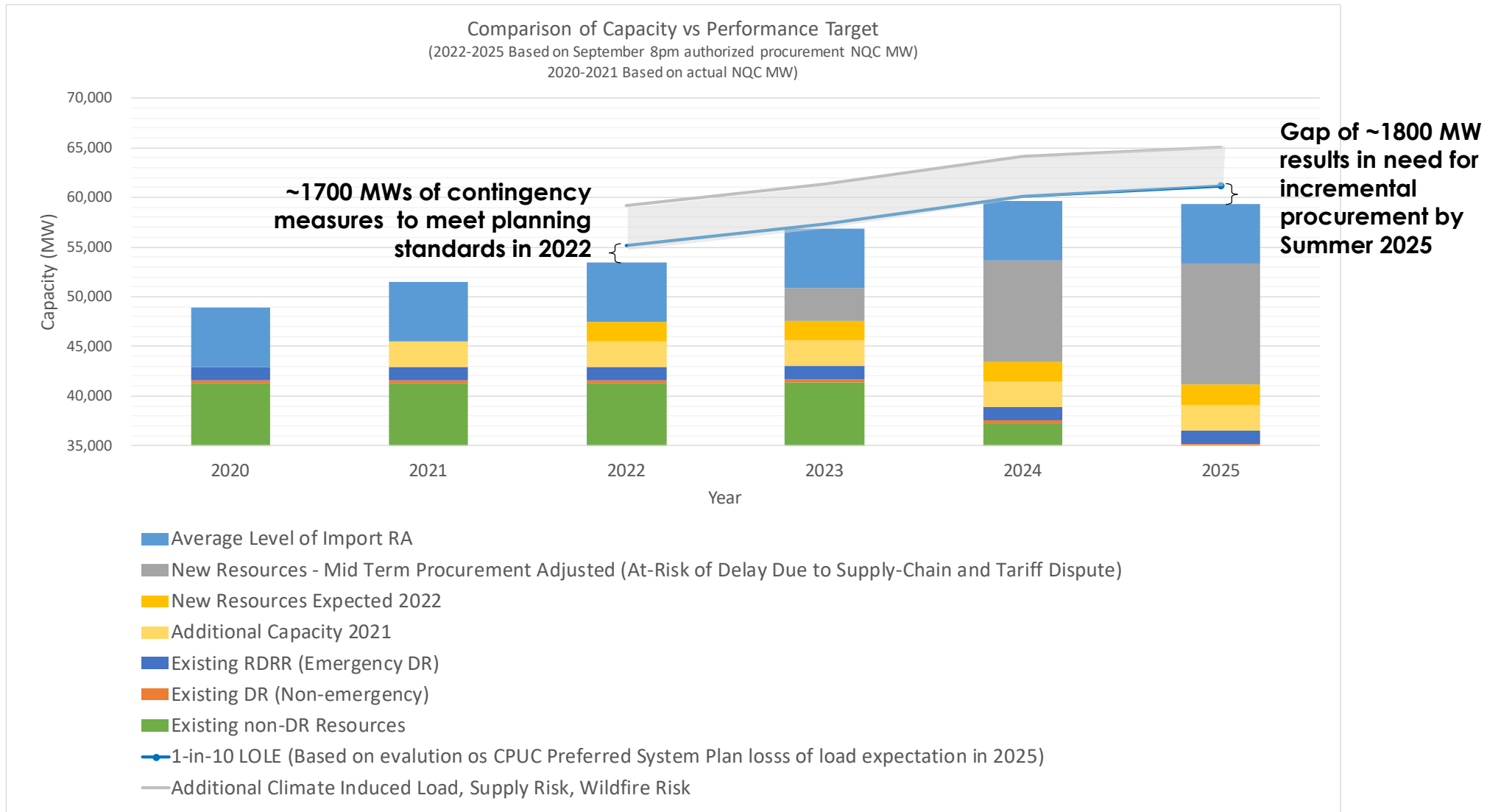


Presentation for  
Assembly Committee on Utilities and  
Energy Hearing on  
Proposal to Extend Operations of the  
Diablo Canyon Nuclear Power Plant

August 26, 2022



# September peak day conditions: 2022- 2025



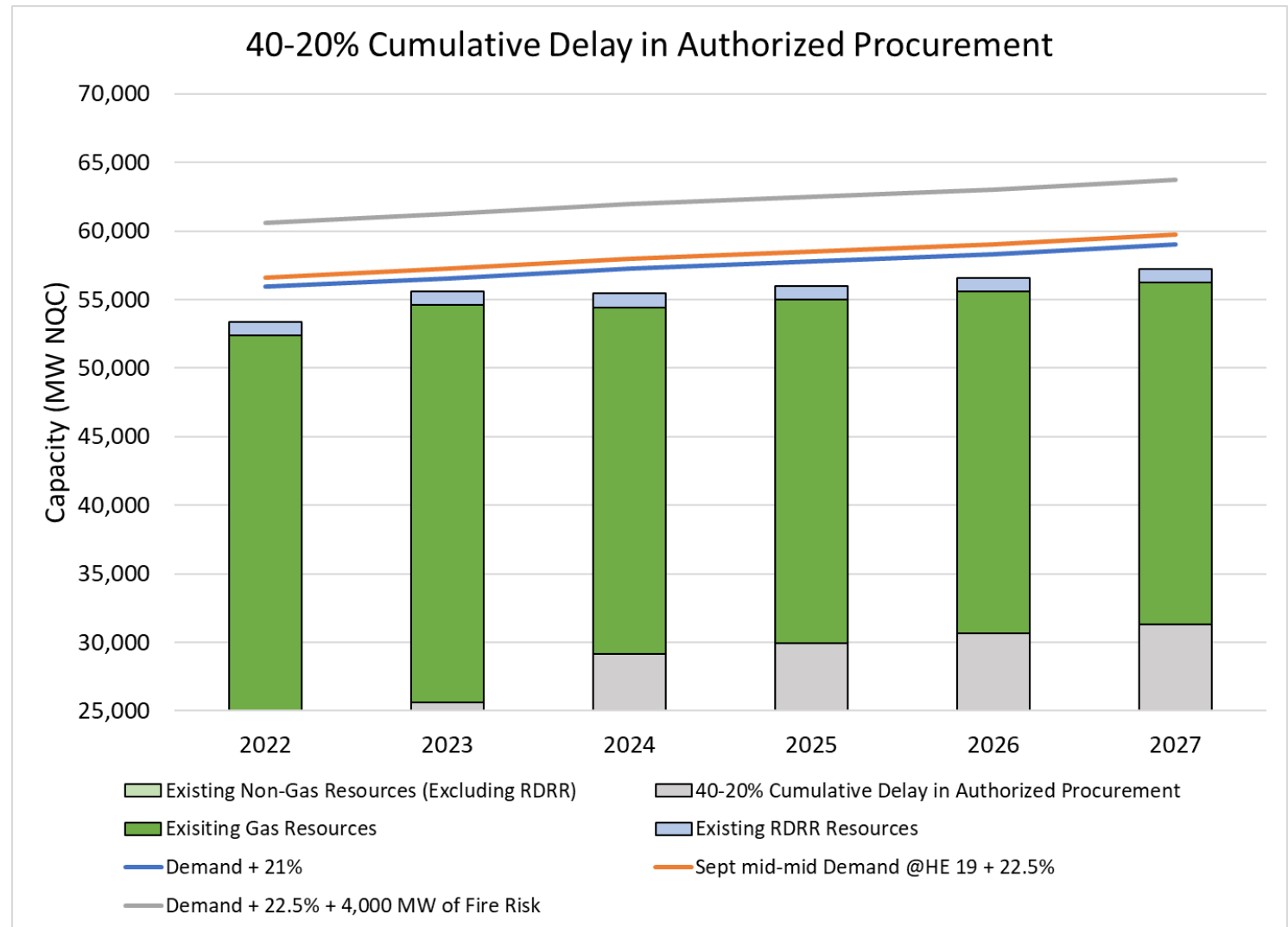
# Midterm: Significant Procurement Underway, but Challenges Undermine Reliability

11,500 MW NQC  
New Procurement

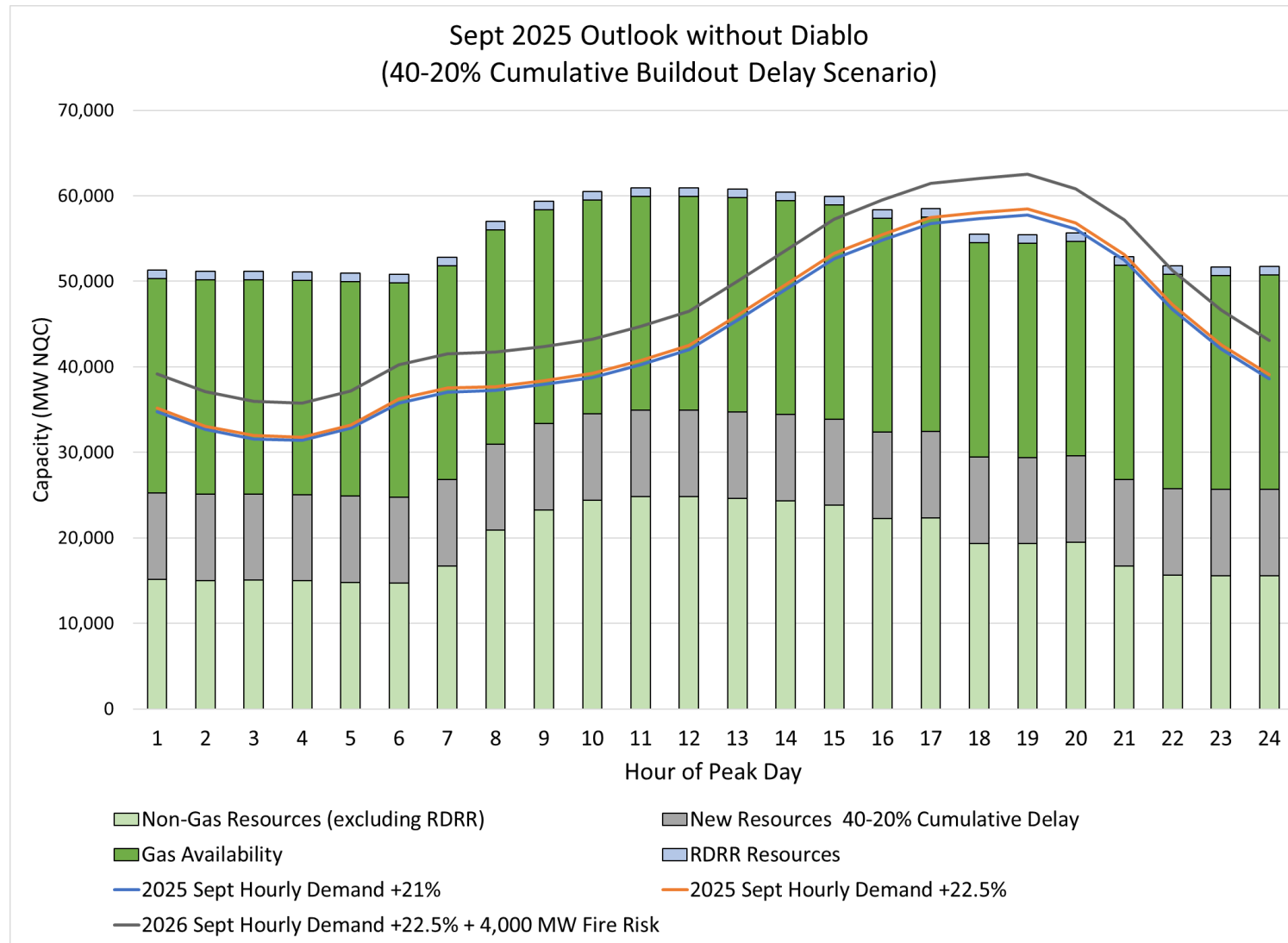
Challenges:

- Procurement delays
- Load growth uncertainty
- Climate-driven extreme weather events

Net Qualifying Capacity (NQC) is the total capacity contribution of a resource that counts towards meeting resource adequacy obligations.



# Need for Peak Capacity in 2025



# Diablo Canyon Can Fill Capacity Need and Displace Gas Generation

