

Valley Clean Energy

Ag Sector Dynamic Pricing



Launched in June 2018 with Yolo County; Cities of Woodland, Davis.

Winters joined in January 2021.

- **61,000 Customer Accounts / 750 GWh annual load / 225MW Peak**
 - 2021 median household income: \$78k; CA \$84k (2021)
 - Poverty rate: 14.8%; 25% Customers Low Income Qualified (CARE/FERA)
 - 15% Agricultural (load)
 - 90% Customer Participation
 - Yolo, Woodland, Davis each have roughly 1/3rd of load, Winters 5%
- **Quick Facts:**
 - On schedule for 85%+ renewable portfolio by 2024; all new renewable fleet except local small hydro (3MW)
 - 100% hedged for 2023 RA; 83% hedged for 24' RA; long-term hedges based on long-term contracts

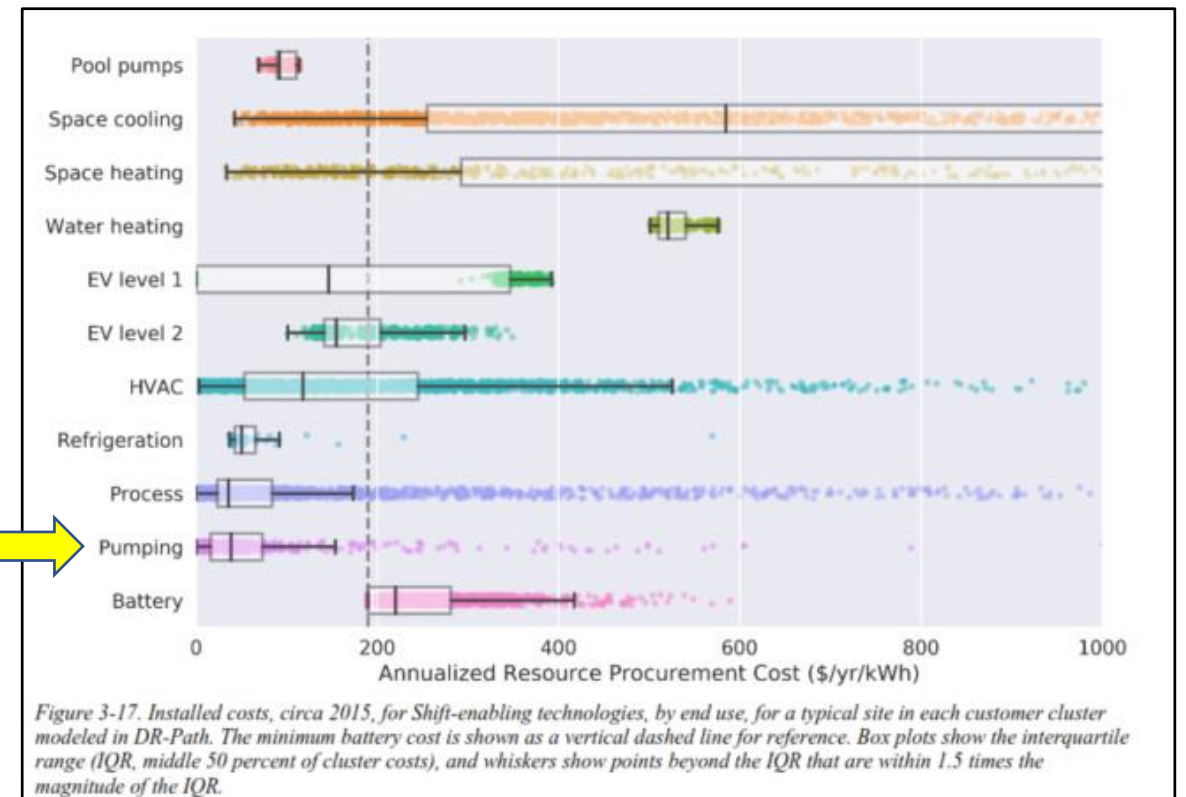
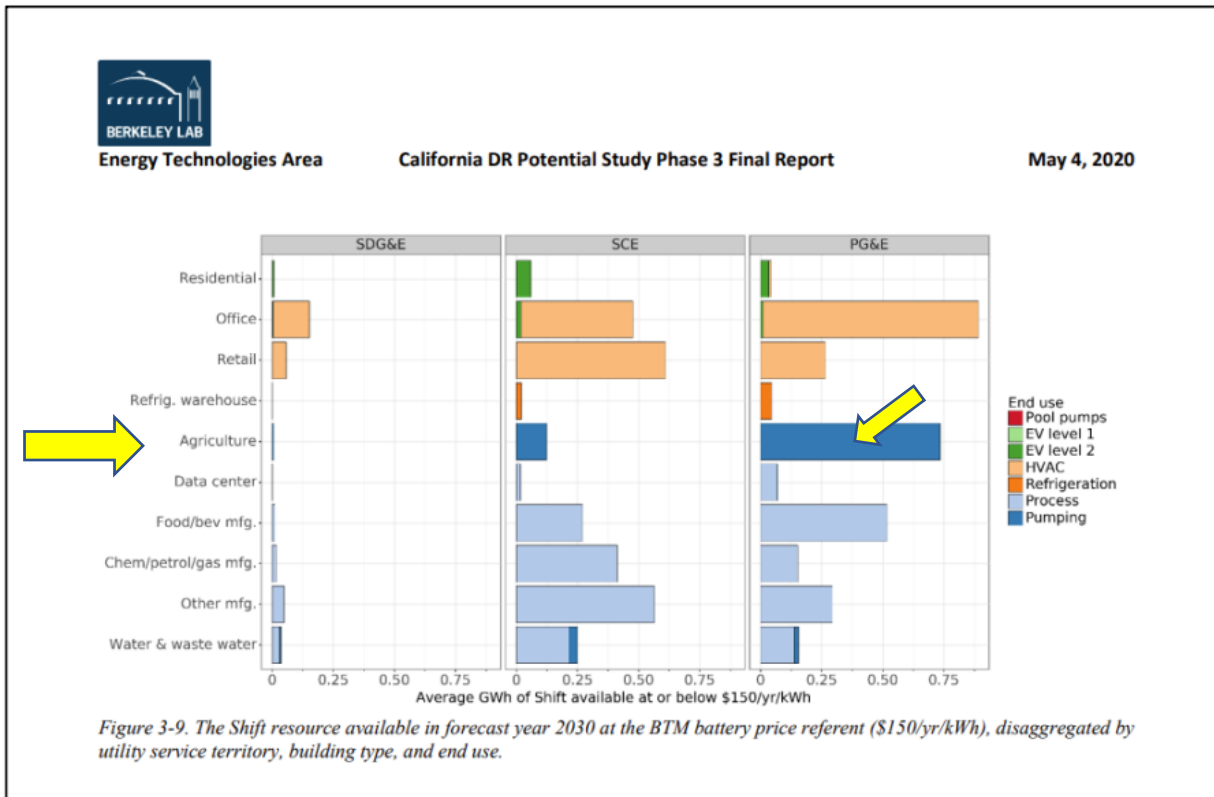
Valley Clean Energy

Ag Sector Dynamic Pricing



Ag Pumping is the largest available resource, second only to Office HVAC*

Pumping is the least expensive shift resource



Valley Clean Energy

Ag Sector Dynamic Pricing



Scheduled Pump HP (15kW)
20



Schedule Operation Notes
Pump Panel Switch in AUTO

Select TOU or AgFIT rates

TOU AgFIT

Week of

Sunday Aug 28

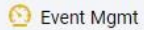
→ PRE-FILL

RECOMMEND

NEXT



David Meyers



↔ close sidebar



Real-Time Data Connected

MyPolaris BETA

SIGN OUT

	8/28 Sunday	8/29 Monday	8/30 Tuesday	8/31 Wednesday	9/1 Thursday	9/2 Friday	9/3 Saturday
12:00am	0.22	0.21	0.23	0.24	0.32	0.29	0.27
01:00am	0.20	0.20	0.21	0.23	0.27	0.26	0.24
02:00am	0.21	0.21	0.22	0.25	0.28	0.28	0.26
03:00am	0.20	0.21	0.21	0.24	0.28	0.26	0.25
04:00am	0.21	0.21	0.23	0.24	0.27	0.25	0.24
05:00am	0.21	0.21	0.23	0.24	0.28	0.27	0.25
06:00am	0.20	0.25	0.27	0.30	0.34	0.31	0.25
07:00am	0.19	0.21	0.23	0.25	0.27	0.27	0.22
08:00am	0.17	0.21	0.21	0.23	0.24	0.24	0.21
09:00am	0.16	0.19	0.20	0.22	0.24	0.24	0.21
10:00am	0.16	0.20	0.20	0.22	0.26	0.25	0.21
11:00am	0.16	0.21	0.21	0.24	0.31	0.29	0.24
12:00pm	0.18	0.20	0.22	0.25	0.31	0.29	0.26
01:00pm	0.19	0.22	0.25	0.29	0.36	0.34	0.30
02:00pm	0.21	0.25	0.29	0.34	0.43	0.38	0.36
03:00pm	0.23	0.27	0.31	0.38	0.50	0.42	0.41
04:00pm	0.26	0.31	0.35	0.41	0.55	0.46	0.45
05:00pm	0.34	0.36	0.43	0.51	0.67	0.53	0.55
06:00pm	0.56	0.55	0.70	0.87	1.26	0.95	0.93
07:00pm	0.72	0.66	0.77	0.91	1.35	0.97	0.98
08:00pm	0.53	0.46	0.53	0.59	0.77	0.59	0.54
09:00pm	0.27	0.26	0.30	0.34	0.39	0.36	0.36
10:00pm	0.23	0.23	0.26	0.28	0.35	0.33	0.33
11:00pm	0.22	0.24	0.25	0.27	0.33	0.32	0.31

estimated bills:

08/01 - 08/31 VCE LSE -

09/01 - 09/30 VCE LSE

Bill Period: Aug 1 - Aug 31

Transactive Energy \$0.18 (AVG) existing: 12,058kWh new: 1,050kWh \$2,224.03

Charges with Subscription

Bill Period: Sep 1 - Sep 30

Transactive Energy \$0.24 (AVG) existing: 1,246kWh new: 750kWh \$293.48 + \$15.03

Charges with Subscription

CALCULATE

Calculate final Schedule cost

Estimated Schedule Charges (120hr) \$15.03

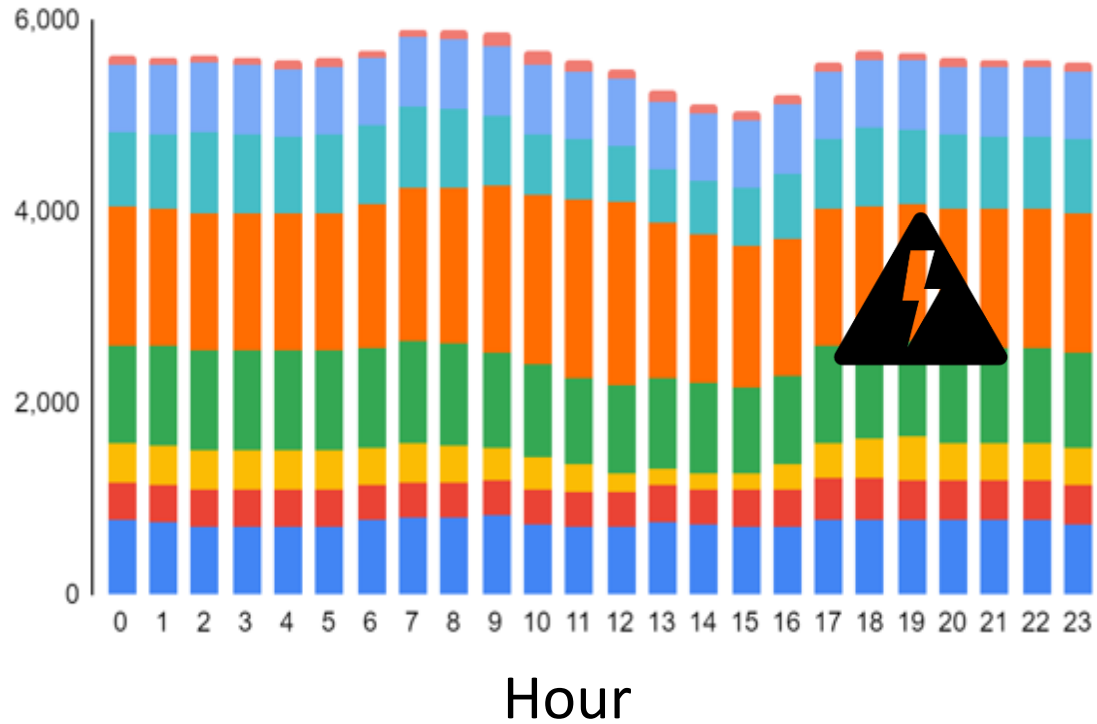
Existing Bill Charges \$2,517.51

Total \$2,532.54

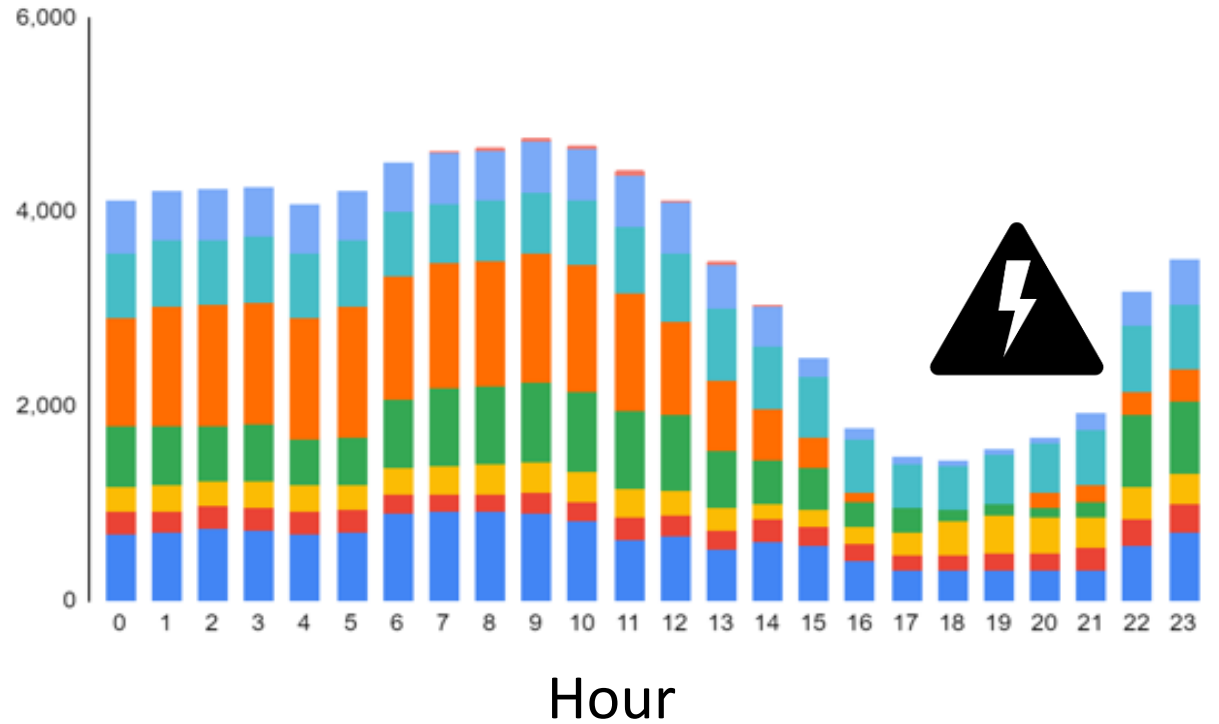
Valley Clean Energy Ag Sector Dynamic Pricing



2021 Usage x Hr (Aug)



2022 Usage x Hr (Aug)



Valley Clean Energy Ag Sector Dynamic Pricing



Phase 1 + 2 August - September

